

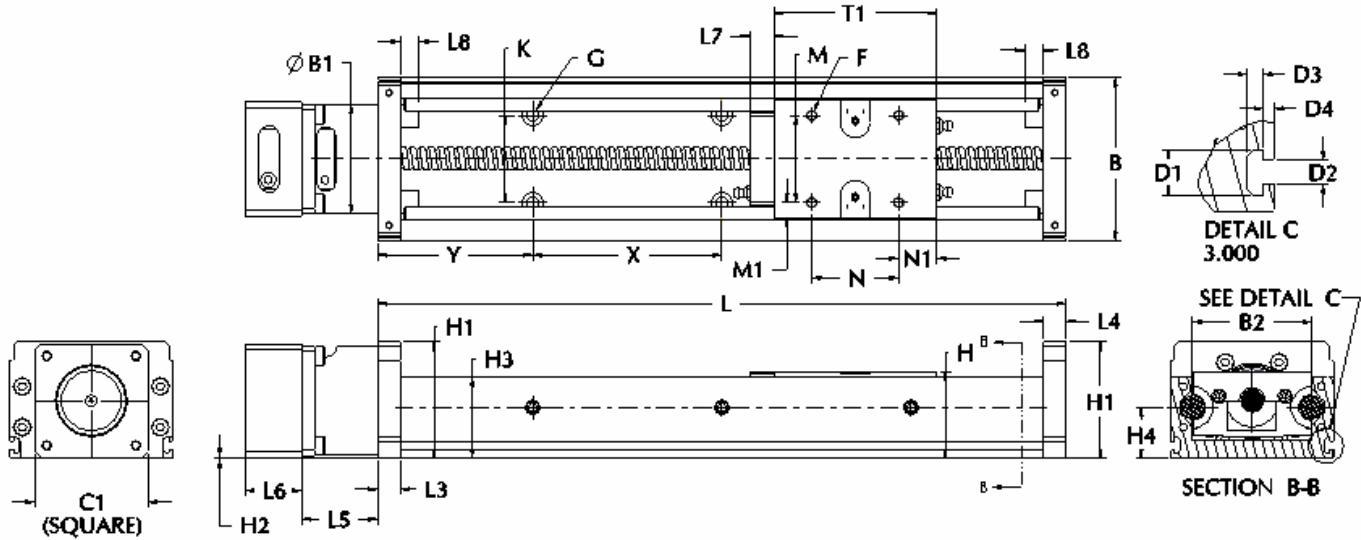
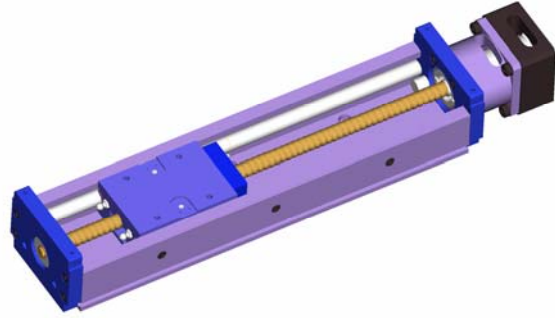
Thomson Microstage* MS46 (Ball Screw or Lead Screw Driven)

Features:

- Compact lightweight channel extrusion
- Pre-aligned and pre-assembled for immediate installation and use
- Designed for light to medium loads

Components:

- 4 segmented-technology Super Ball Bushing bearings
- 1 double LinearRace rail assembly
- 1 integrated ball screw or leads screw assembly
- 1 Aircraft-grade aluminum base extrusion



Maximum stroke length is determined by subtracting the carriage length (T1), the end block lengths (L3 & L4), the ball nut extension (L7), and 2x the bumper lengths (L8) from the total system length (L).

MicroStage MS46 Ball Screw and Lead Screw Actuated Linear Motion Systems														(dimensions in mm)	
Part Number	B	φB1	B2	C1 square (*)	D1	D2	D3	D4	F	G	H	H1	H2	H3	
MS46XXX	86	57.5	63	59.9 (guideline A) 80.0 (guideline B) 89.9 (guideline C)	8	4.2	2.8	2	M6 x 1.0 x 8 deep	M6 screw	46	61.5	.5 (guideline A) -9.5 (guideline B) -14.5 (guideline C)	43	

MicroStage MS46 Ball Screw and Lead Screw Actuated Linear Motion Systems																	(dimensions in mm)
Part Number	H4	K	L3	L4 (**)	L5	L6 (*)	L7	L8	M	M1	N	N1	T1	X	Y	Load Capacity	
MS46XXX	27	46	12	12 (w/o brake) 25 (with brake)	40.2	29.7 (guideline A) 31.0 (guideline B) 37.3 (guideline C)	12.7	10	46	8.05	46	20	86	100	82	330 N	

MicroStage MS46 Ball Screw and Lead Screw standard lengths		
Part Number	Length (L) Standard (mm)	Stroke (mm)
MS46XXOX0364-082NXXXXXXXXXX MS46XXOX0377-082BXXXXXXXXXX	364 (w/o brake) 377 (with brake)	221.3
MS46XXOX0464-082NXXXXXXXXXX MS46XXOX0477-082BXXXXXXXXXX	464 (w/o brake) 477 (with brake)	321.3
MS46XXOX0564-082NXXXXXXXXXX MS46XXOX0577-082BXXXXXXXXXX	564 (w/o brake) 577 (with brake)	421.3
MS46XXOX0664-082NXXXXXXXXXX MS46XXOX0677-082BXXXXXXXXXX	664 (w/o brake) 677 (with brake)	521.3
MS46XXOX0764-082NXXXXXXXXXX MS46XXOX0777-082BXXXXXXXXXX	764 (w/o brake) 777 (with brake)	621.3
MS46XXOX0964-082NXXXXXXXXXX MS46XXOX0977-082BXXXXXXXXXX	964 (w/o brake) 977 (with brake)	821.3

(*) See motor mounting guidelines.

(**) End plate (L4) is longer when specified with a brake.

MicroStage MS46 standard Ball Screw and Lead Screws				
Part Number	Screw type	Screw lead (mm)	Screw diameter (mm)	Pre-load
MS46BPOXXXXX-XXXXXXXXXXXXX	Ball Screw	5	12	yes
MS46BBOXXXXXX-XXXXXXXXXXXXX	Ball Screw	5	12	no
MS46BQOXXXXX-XXXXXXXXXXXXX	Ball Screw	10	12	yes
MS46BROXXXXX-XXXXXXXXXXXXX	Ball Screw	10	12	no
MS46LKOXXXXX-XXXXXXXXXXXXX	Lead Screw	3	12	yes
MS46LLOXXXXX-XXXXXXXXXXXXX	Lead Screw	10	12	yes
MS46LMOXXXXX-XXXXXXXXXXXXX	Lead Screw	25	12	yes