

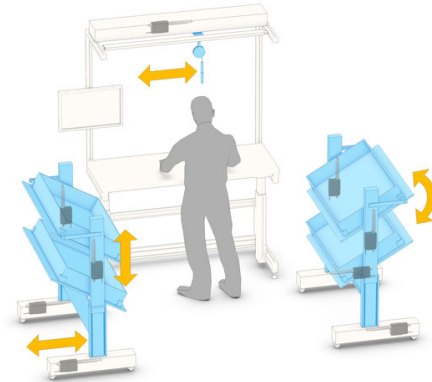


What can smart electric actuators do for your application's ergonomics?

The ergonomic benefits of electric actuators have been realized in industrial applications for decades, however, the recent integration of onboard electronics has significantly improved their workplace comfort, safety and efficiency.

A recent *Motion Design* article examined the ergonomic benefits that have been most noticeable to users as they're related to smart electric actuator features such as:

- Digital motor control
- Digital and analog position feedback
- Synchronization
- Real-time monitoring



Click below to read the full article and learn how electric actuators are allowing design engineers to deliver automated solutions that go beyond basic linear functionality.

[READ THE FULL ARTICLE](#)

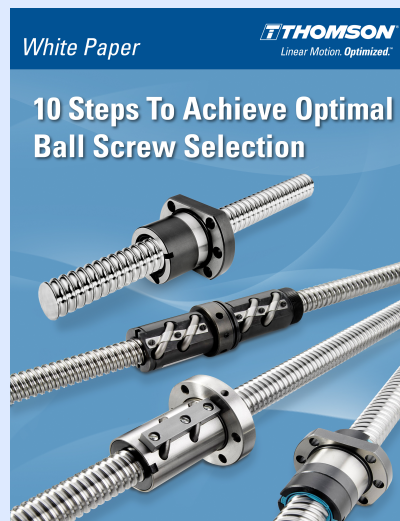
[TRY OUR ELECTRIC ACTUATOR SELECTOR TOOL](#)

Choosing the right ball screw can ensure machine accuracy, repeatability, long life and reduced total cost of ownership

Access our new white paper and learn how to make the optimal choice

Whether you're specifying linear motion components for small laboratory fluid pumps or large overhead gantry systems, there are many factors a design engineer must consider in order to ensure optimal application performance. This especially rings true for ball screw assemblies, which are found in countless automation applications

To help steer you toward informed ball screw selections, our new white paper explores 10 vital factors that every motion system designer must consider.



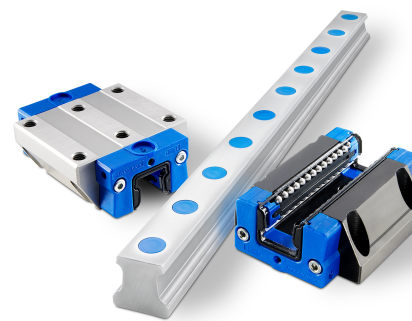
Access "10 Steps to Achieve Optimal Ball Screw Selection" today and keep the PDF as reference for years and years of step-by-step guidance.

[ACCESS THE WHITE PAPER](#)

Discover your next profile rail solution in only minutes

Try our new online selector tool

With multiple, ongoing machine design projects and tight deadlines looming, who can afford the time for extensive searches for the ideal profile rail components? After months of development by the leader in linear motion, Thomson has introduced its [enhanced online selector tool for profile rails, carriages and assemblies](#), which greatly simplifies the search and selection process to help you quickly identify the right part for the job. Access new, verified 3D models, view up-front pricing and lead times, and purchase the product immediately.



[TRY THE TOOL](#)

Share via Social Media

